

SEDIMENT FILTRATION



INLINE CENTRIFUGAL SEDIMENT FILTERS FOR HOT WATER APPLICATIONS



Hot Water
Spin Down
Sediment
Filter

Hot Water
Sediment
Trapper
Filter

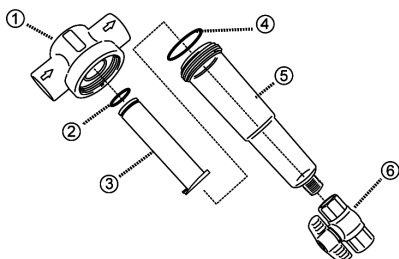
Hot Water Spin Down Filters make solid particle removal simple and economical. These inline centrifugal filters provide the same efficient and powerful sediment filtration as our Spin Down filters, while adding resistance to high temperatures (up to 200°F). Additionally, the Hot Water Filter's thermoplastic construction allows for increased chemical resistance. **Hot Water Sediment Trapper Filters** offer a larger storage area (less maintenance time) and a unique element that separates the sediment and traps it beneath the element where it collects until flushed away.

- Easily flush sediment from filter by simply opening purge valve
- Clear cover easily removed for total cleaning
- No tools required (hand tighten only—using tools voids warranty)
- Sediment is visible through clear cover indicating need for flushing
- Cleanable and reusable stainless steel filter screen
- Designed for hot water applications up to 200°F (93°C)

SCREEN SIZES

Mesh	Microns	Opening	
		inches	mm
30	533	0.021	0.533
60	254	0.010	0.254
100	152	0.006	0.152
140	104	0.004	0.102
200	74	0.0029	0.073

NOTE: See Mesh Selection table on next page for mesh size recommendations.



REPLACEMENT PARTS AVAILABLE

- | | |
|-------------------|-----------------|
| 1. Body | 4. Cover O-ring |
| 2. Element O-ring | 5. Cover |
| 3. Element | 6. Purge Valve |

APPLICATIONS

Geothermal Systems, Cooling Towers, Hot Water Heaters, Hydronic Radiant Floor Heating Systems, Industrial (Machine Coolant and Cutting Fluids), Spas/Jacuzzis

ORDERING INFORMATION

- UR34-(*)HT-F** 3/4 inch FPT Hot Water Spin Down Filter
UR34-(*)STHT-F 3/4 inch FPT Hot Water Sediment Trapper Filter
UR12-(*)HT-F 1-1/4 inch FPT Hot Water Spin Down Filter
UR15-(*)HT-F 1-1/2 inch FPT Hot Water Spin Down Filter

(*) = Mesh Size: 30, 60, 100, 140, 200

Examples:

UR12-100HT-F = Hot Water Spin Down Filter with 1-1/4 inch FPT connections and 100 mesh high temperature stainless steel screen

UR34-60STHT-F = Hot Water Sediment Trapper Filter with 3/4 inch FPT connections and 60 mesh high temperature stainless steel screen

MATERIALS OF CONSTRUCTION

Body: Polypropylene with Stainless Steel support ring
Cover: Heat/chemical resistant HP polymer
Element: Polypropylene with Stainless Steel screen

Purge Valve: CPVC
O-rings: EPDM

SEDIMENT FILTRATION

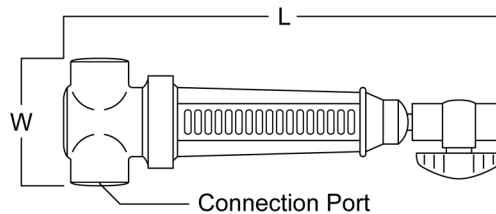


INLINE CENTRIFUGAL SEDIMENT FILTERS FOR HOT WATER APPLICATIONS

MESH SELECTION

Material in Water	Application	Mesh Size
Shale, shell	General Use	24
Debris	General use	24, 30, 40
Pipe scale, coarse sand	Sprinkler systems, faucet aerators, sand sensitive valves	40, 60
Fine sand, grit from new wells	Drip irrigation systems, faucet aerators, sand sensitive valves	100, 140
	Poultry growers, watering devices	100
	Fogger nozzles	140
Very fine sand and grit	Pre-treatment	250, 500
	Pre-treatment, ultra water systems, RO, etc.	1000
Algae	Grows in presence of light under clear filter cover	Use Sun Shield

NOTE: In general, use the coarsest screen deemed necessary to filter the material you want removed. This will result in longer runs between blow-downs.

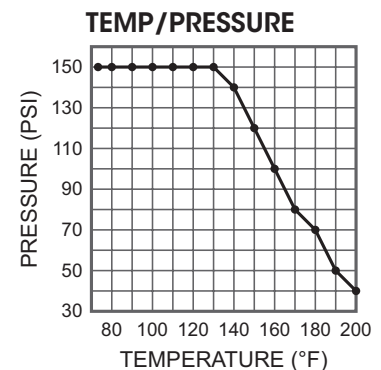
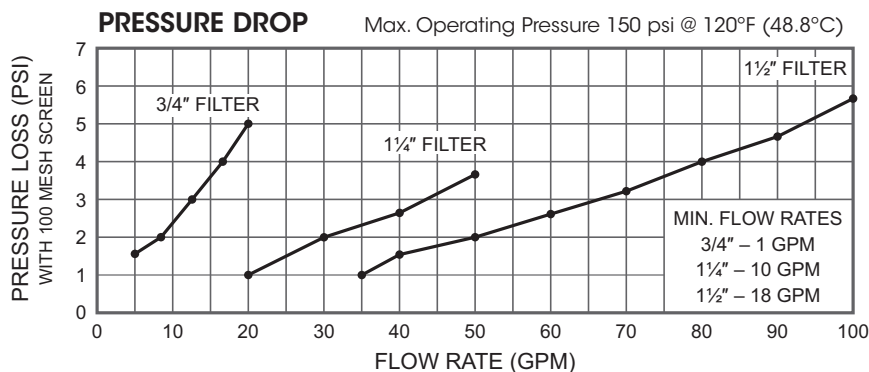


HOT WATER SPIN DOWN FILTER SPECIFICATIONS

Part Size	Length	Width	Flow Capacity
3/4 inch	11-3/8 inch	5 inch	1 to 25 gpm
1-1/4 inch	15-3/8 inch	5-1/4 inch	10 to 50 gpm
1-1/2 inch	17-7/8 inch	5-1/2 inch	18 to 100 gpm

HOT WATER SEDIMENT TRAPPER SPECIFICATIONS

Part Size	Length	Width	Flow Capacity
3/4 inch	14-3/8 inch	5 inch	1 to 25 gpm



NOTE: These filters are specially designed for use in applications with water temperatures up to 200°F.